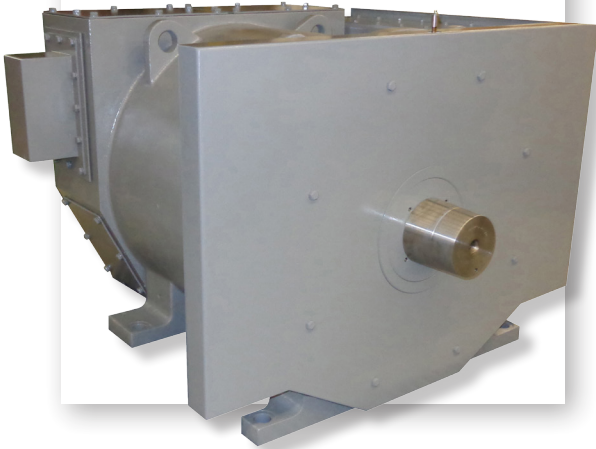




Ward Leonard

Excellence in Motor and Control Solutions™

1,800 HP AC Drilling Motor – WL29BC180



High Power Density Technology for Oil & Gas Applications

Up To 1800 HP in a Standard 1500 HP Frame

Drill deeper, faster and with more efficiency with High Power Density motors from Ward Leonard. Utilizing proprietary intra-slot cooling technologies, the WL29BC180 delivers **20% more horsepower** than similar motors, and will withstand rigorous high shock and vibration conditions for decades of continuous service in harsh environments.

Standard Features

- ◆ 6 pole stator with form wound windings
- ◆ Extra tough pitch copper rotor bars
- ◆ Certified Class H insulation
 - Robotically taped Mica-Kapton
 - Fully vacuum impregnated (VPI)
 - Tested for 4 hours under water at 500 V
- ◆ 4340 alloy shafts
- ◆ Six 100Ω platinum RTDs; 2/phase embedded in stator

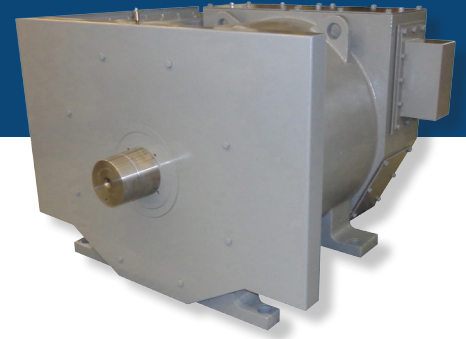
- ◆ Right or left blower and junction box positions
- ◆ Designed for Variable Frequency Drive operation
- ◆ Heater
- ◆ Double shaft extension (tapered, splined or keyed)
- ◆ ATEX and CSA-approved

Optional Features

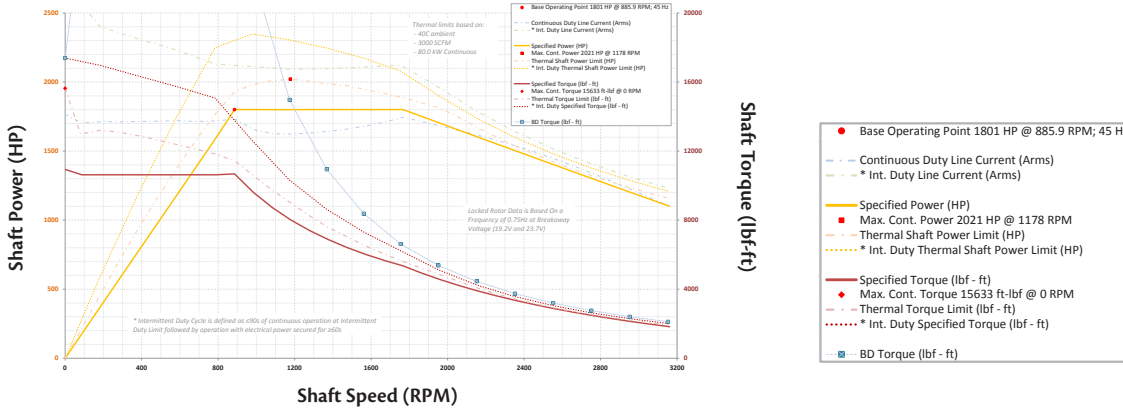
- ◆ Encoder
- ◆ Bearing RTD
- ◆ Blower assembly
- ◆ Air pressure switch
- ◆ IP 56 junction box
- ◆ IP 44 motor enclosure
- ◆ Insulated bearing on non-drive end
- ◆ ABS and DNV



1,800 HP AC Drilling Motor



Speed - Torque Performance That Leads the Industry

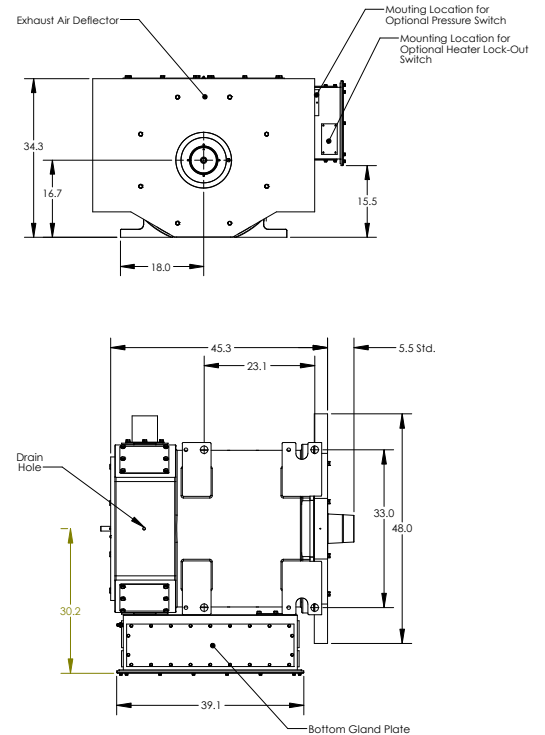


Critical Data

Model number	WL29BC180
Voltage (AC)	575 ± 10% ***
Current (Amps)	1610
Rated Speed	986 RPM
Torque (lb ft)	9590 at rated speed
HP	1800 at rated speed
Max. permissible speed	3000 RPM **
Base motor weight	7,500 lbs.
Rotor weight	2,250 lbs
Recommended blower CFM	3250
Rotor balance	50 gram inches
Standard bearing grease	Mobil Unirex EP 2 *
Megger resistance	20 MΩ

- * Others available upon request.
- ** With ball bearings; roller bearings reduce maximum speed.
- *** 690V maximum...consult factory.

Dimensions



Ward Leonard
Excellence in Motor and Control Solutions™

Ward Leonard is a global provider of highly engineered motors, controls and integrated solutions that power Oil & Gas exploration. We provide benchmark performance, productivity, durability and customer support primarily for Top Drives, Mud Pumps, Draw Works, Rotary Tables, Engine Controls and Control Houses. Learn more at www.wardleonard.com.

401 Watertown Road, Thomaston, CT 06787
P: 860.283.5801 | F: 860.283.5777 | sales@wardleonard.com | WardLeonard.com